

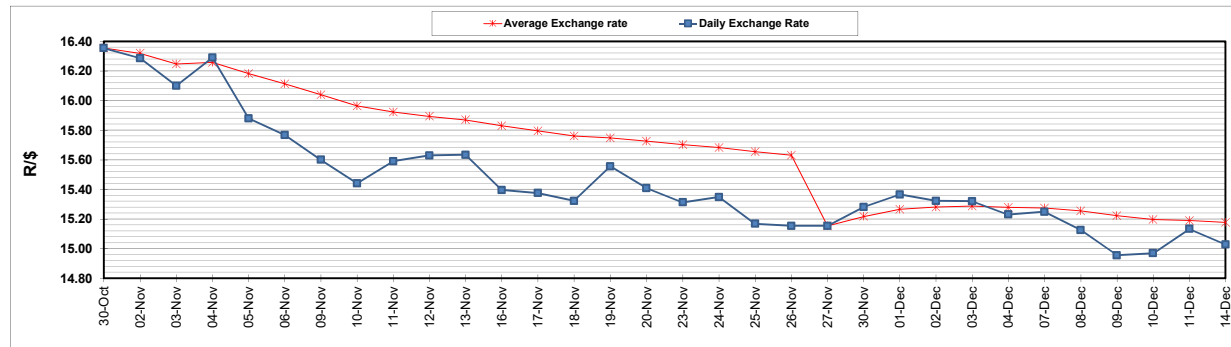
	PETROL 95 ULP	PETROL 93 ULP & LRP	DIESEL 0.05%	DIESEL 0.005%	ILL. PAR.
GAUTENG PUMP PRICE (SA c/l) AS FROM 02/12/2020	1,446.000	1,426.000	-	-	-
WHOLESALE PRICE (SA c/l) AS FROM 02/12/2020	-	-	1,245.420	1,247.820	684.688
SINGLE NATIONAL MAXIMUM RETAIL PRICE	-	-	-	-	856.000
BASIC FUEL PRICE - 14/12/2020 (SA c/l)	529.820	524.896	545.668	546.697	530.457
PRESS RELEASE CONTRIBUTION TO BFP 02/12/2020 - 14/12/2020 (SA c/l)	479.170	469.170	486.630	489.030	472.128
UNIT OVER/(UNDER) RECOVERY - 14/12/2020 (SA c/l)	(50.650)	(55.726)	(59.038)	(57.667)	(58.329)
AVERAGE BASIC FUEL PRICE 27/11/2020 - 14/12/2020	515.769	509.389	535.361	536.724	518.747
AVERAGE UNIT OVER/(UNDER) RECOVERY 27/11/2020 - 14/12/2020	(29.774)	(33.394)	(51.731)	(50.694)	(51.869)

### ANALYSIS MOVEMENT OF AVERAGE OVER/(UNDER) RECOVERY

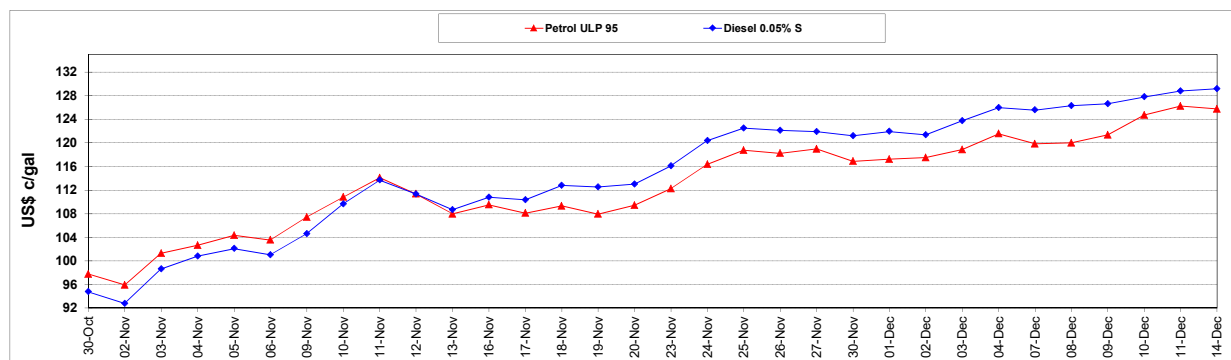
	PETROL 95	PETROL 93	DIESEL 0.05%	DIESEL 0.005%	ILL. PAR.
- MOVEMENT IN INTERNATIONAL PRODUCT PRICES	(45.161)	(48.591)	(67.703)	(66.706)	(67.345)
- MOVEMENT IN EXCHANGE RATE	15.387	15.197	15.972	16.012	15.476
AVERAGE UNIT OVER/(UNDER) RECOVERY 27/11/2020 - 14/12/2020	(29.774)	(33.394)	(51.731)	(50.694)	(51.869)

**R/\$ EXCHANGE RATE - (R/\$15.0290 - 14/12/2020)**

### EXCHANGE RATE USED IN BASIC FUEL PRICE



### INTERNATIONAL PRODUCT PRICES OF BASKET USED IN BASIC FUEL PRICE



### BASIC FUEL PRICE IN SA CENTS PER LITRE

